

# Sustainability





## Engineering a sustainable future

*“PB will be a positive and highly influential force in the development and operation of infrastructure around the world. Through service to our clients and collaboration with colleagues, we will create a lasting legacy that improves the lives of people & communities.”*

*PB's vision*

## Sustainability vision

PB believes sustainability is central to its operations and service offering. As an infrastructure and consulting firm PB is in a unique position to influence the entire life cycle of major public works and community projects with the goal of moving infrastructure development towards 'zero harm'.

As a client-focussed business, PB understands the need to generate real value for clients and stakeholders that is integrated and across the triple-bottom-line (social, economic and environmental).

PB's systemic approach to sustainability is what differentiates it from its competitors. Sustainability is not treated as an 'add on' but as an integral part of the business. PB is developing a corporate culture where people are trained to think differently, imaginatively and innovatively to achieve business outcomes for clients.

PB's approach is to integrate sustainability into all national capabilities - engineering, scientific, strategic and stakeholder engagement.

This strategic direction allows PB to expand upon existing sustainability expertise to offer a whole of organisation integrated sustainability service, that is adaptable to the needs of our clients.

## Services and solutions

Sustainability is a driver in everything that is done at PB, from the services and solutions provided to clients to the way PB manages its operations.

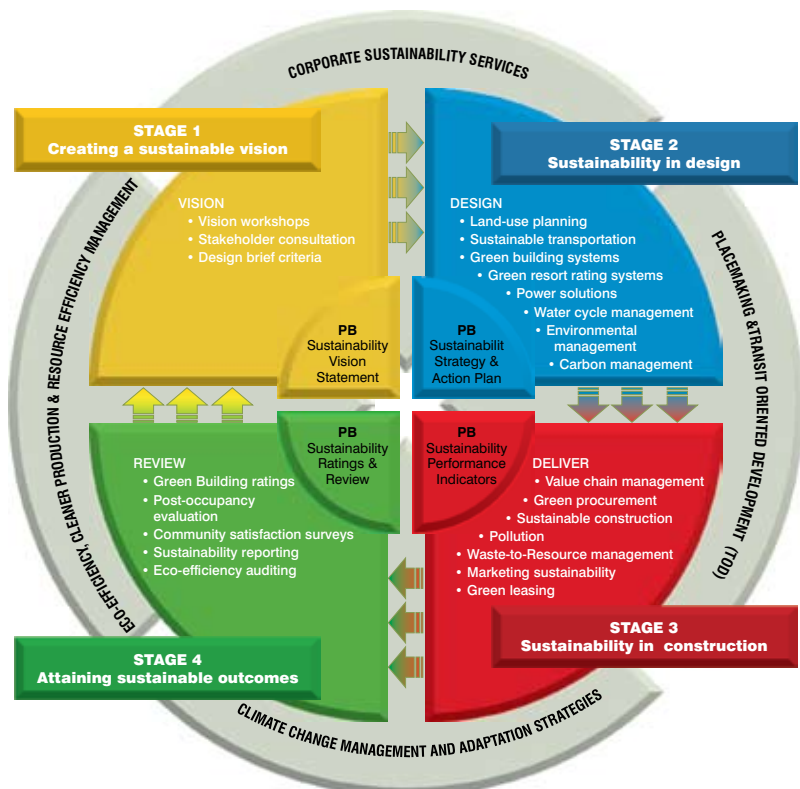
PB's sustainability services include:

- sustainability appraisals
- facilitating sustainability workshops
- sustainability strategy development and key sustainability performance measures
- eco-efficiency and carbon auditing
- sustainability reporting and reviews
- integrating sustainable development principles and expertise into the planning, design and construction/management/operation of specific projects.



## Project sustainability roadmap

PB believes that sustainability is a vital element of the master planning process requiring integration, adaptation and innovation throughout project initiation, design development, construction and operational phases. The following diagram provides an overview of the sustainability services PB can provide to clients during key project phases.





## Sustainability projects

### Tullamarine-Calder Interchange Alliance, VIC

The alliance achieved significant results particularly in the area of sustainability. The project team used 100% recycled high-density polyethylene pipe in place of concrete pipe on road shoulders. To offset 10% of the annual freeway lighting power demand, 210 solar panels were incorporated into freeway noise walls. Recycling of construction waste was 97%.

### Adelaide Brighton Cement Alternative Fuels Project

PB was commissioned to design and develop an innovative new materials handling, storage and injection system to introduce recycled waste materials into the calciner system at Adelaide Brighton Cement's (ABC) facility in South Australia. The project enables waste from construction and demolition activities to be diverted from landfill, saving landfill space and extending the life of the landfill. This waste to energy project reduces reliance on fossil fuels and showcases to the wider community what can be done to enhance sustainable living practices. This project provides not only significant economic benefits to ABC, but also promotes the triple bottom line benefits (economic, environmental and social) of utilising alternative fuels.

### Newstead Riverpark, QLD

During redevelopment activities of this landmark site, PB managed community contact with residents and businesses surrounding the site on issues including construction noise, odour and dust. Formation of a Community Reference Group, production of project fact sheets and newsletters presenting technical information in plain english, and management of a toll free information line were effective tools in consulting with the community and stakeholders.

### Bulimba Creek Oxbow, QLD

In 2000, the 4.5 km Port of Brisbane Motorway (PoBM) was constructed through a highly degraded wetland area that included the Bulimba Creek Oxbow. Seeking sustainable development outcomes for this project, an alliance was formed between government, industry and the community. The alliance identified the potential of restoring the ecological function of this heavily degraded site and the opportunity to deliver to the community significant environmental outcomes and innovative hydraulic solutions. Formerly part of the PoBM Alliance, PB as part of their corporate social responsibility continues to support the Oxbow rehabilitation project. In April 2006, PB provided the Bulimba Creek Catchment Coordinating Committee (B4C) with a strategy to undertake fauna monitoring for the year 2006/2007. The Oxbow project has attracted much interest, appreciation and support within PB (including financial support) over the last few years. It is a great example of a major industry partnership with positive environmental outcomes.

### Namoi 2030: Regional Resource Strategy, NSW

PB prepared the Namoi 2030 Regional Strategy on behalf of the Department of Planning, Narrabri Shire Council, Liverpool Plains Shire Council, Shire of Gunnedah, Namoi Catchment Management Authority. This required integrating key issues including coal resources, groundwater, urban growth and maintaining productive agricultural land. Other issues addressed in the strategy include surface water, other minerals, forestry, biodiversity, economic development and implications for the local community.

The strategy was prepared based on extensive community and stakeholder consultation, GIS mapping, opportunities and constraints analysis, resource utilisation and infrastructure needs assessment. The strategy provides a sophisticated understanding of the issues and challenges facing growth and development of the sub-region. This includes the need to balance competing environmental, social and economic pressures with protection of sensitive natural environments, urban areas and rural residential establishments, preserving agricultural lands and encouraging diversification of the agricultural sector, promoting well located settlement and providing adequate infrastructure to support new development.

### Gippsland Water Factory Alliance, VIC

When PB and Gippsland Water first considered the project, the focus was a conventional waste management strategy to solve environmental issues (including odour) at Gippsland's Regional Outfall Sewer. However, the project's focus widened to the creation of a social and environmental legacy for future generations. The Gippsland Water Factory is an innovative wastewater treatment and recycling facility. It will treat up to 35 million litres of domestic and industrial wastewater daily, and produce 8 million litres of high quality recycled water each day for purchase by local industry. The remaining treated water will enter the Regional Outfall Sewer odourless.



## Sustainability at PB

All of our operations and project work is governed by the following policies:

- Sustainability policy - the guiding principles for sustainability in PB are based on integration, adaptation and innovation.
- Climate change policy:
  - Carbon neutral initiative, the first of its kind for a major infrastructure firm in Australia.
  - Climate change business unit greenhouse gas mitigation and infrastructure adaptation service offering.
- Ethics policy - guides our decision making and behaviour both internally and externally, providing coverage of safety, equity and environmental considerations.

In addition, PB's Sustainability Report based on GRI guidelines (an Australian engineering firm first) drives sustainability improvements through metrics. Our Green Teams deliver continuous sustainability improvements through implementing aspects of the EMS, as well identifying and acting upon opportunities to improve PB's sustainability performance.

## PB - CUSP Alliance

PB and Curtin University's Sustainable Policy Institute (CUSP) have developed a collaborative partnership based on a shared desire to positively influence change, to encourage open debate and to develop sustainability leadership in business and academia.

The PB-CUSP Alliance vision is to create lasting change through an innovative solutions-focussed approach to complex issues and provide world class research.

The PB-CUSP Alliance seeks to positively influence change and to equip our clients with improved tools to integrate sustainability into their projects and business operations. The Alliance operates under the leadership of Professor Peter Newman and Director of Sustainability, Darren Bilsborough.

## AUSTRALIAN OFFICES

Adelaide  
Phone: 618 8405 4300  
Email: [adelaide@pb.com.au](mailto:adelaide@pb.com.au)

Bendigo  
Phone: 613 5430 3400  
Email: [bendigo@pb.com.au](mailto:bendigo@pb.com.au)

Brisbane  
Phone: 617 3854 6200  
Email: [brisbane@pb.com.au](mailto:brisbane@pb.com.au)

Canberra  
Phone: 612 6281 9500  
Email: [canberra@pb.com.au](mailto:canberra@pb.com.au)

Gold Coast  
Phone: 617 5503 5700  
Email: [brisbane@pb.com.au](mailto:brisbane@pb.com.au)

Melbourne  
Phone: 613 9861 1111  
Email: [melbourne@pb.com.au](mailto:melbourne@pb.com.au)

Newcastle  
Phone: 612 4929 8300  
Email: [newcastle@pb.com.au](mailto:newcastle@pb.com.au)

Perth  
Phone: 618 9489 9700  
Email: [perth@pb.com.au](mailto:perth@pb.com.au)

Singleton  
Phone: 612 6572 3377  
Email: [singleton@pb.com.au](mailto:singleton@pb.com.au)

Sunshine Coast  
Phone: 617 3854 6670  
Email: [brisbane@pb.com.au](mailto:brisbane@pb.com.au)

Sydney  
Phone: 612 9272 5100  
Email: [sydney@pb.com.au](mailto:sydney@pb.com.au)

## NEW ZEALAND OFFICES

Auckland  
Phone: 64 9 377 9941  
Email: [auckland@pbworld.com](mailto:auckland@pbworld.com)

Christchurch  
Phone: 64 3 365 4081  
Email: [christchurch@pbworld.com](mailto:christchurch@pbworld.com)

Wellington  
Phone: 64 4 499 1000  
Email: [wellington@pbworld.com](mailto:wellington@pbworld.com)

## INTERNATIONAL OFFICES

PB has over 150 offices in countries worldwide such as Argentina, Belgium, China, India, Indonesia, Ireland, Japan, Kuwait, Malaysia, New Zealand, Philippines, Poland, Saudi Arabia, Singapore, South Africa, South Korea, Spain, Switzerland, Taiwan, Thailand, Turkey, United Arab Emirates, United Kingdom and USA.

## ABOUT PB

Since its inception over 120 years ago PB has worked on some of the world's most significant infrastructure projects.

We now employ more than 13,000 people in three operating divisions — the Americas (North and South), International (Europe, Africa, Middle East, Asia and Australia-Pacific), and Facilities.

PB Australia-Pacific's multidisciplinary team of over 2,000 professionals offers a comprehensive range of services and total delivery. We manage projects of any scale and finance arrangement — including public private partnerships, alliances and design-build-finance.

In Australia we have worked on infrastructure projects for more than 40 years. In New Zealand over the past 30 years the PB team has developed a strong presence in the power and hydro sectors and, more recently, in the transport and water sectors.

## CONTACT INFORMATION



Darren Bilsborough

Director of Sustainability

Phone: 08 8405 4326

Email: [dbilsborough@pb.com.au](mailto:dbilsborough@pb.com.au)